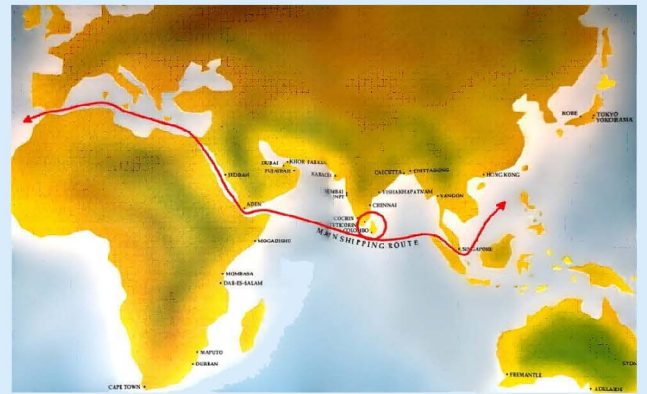
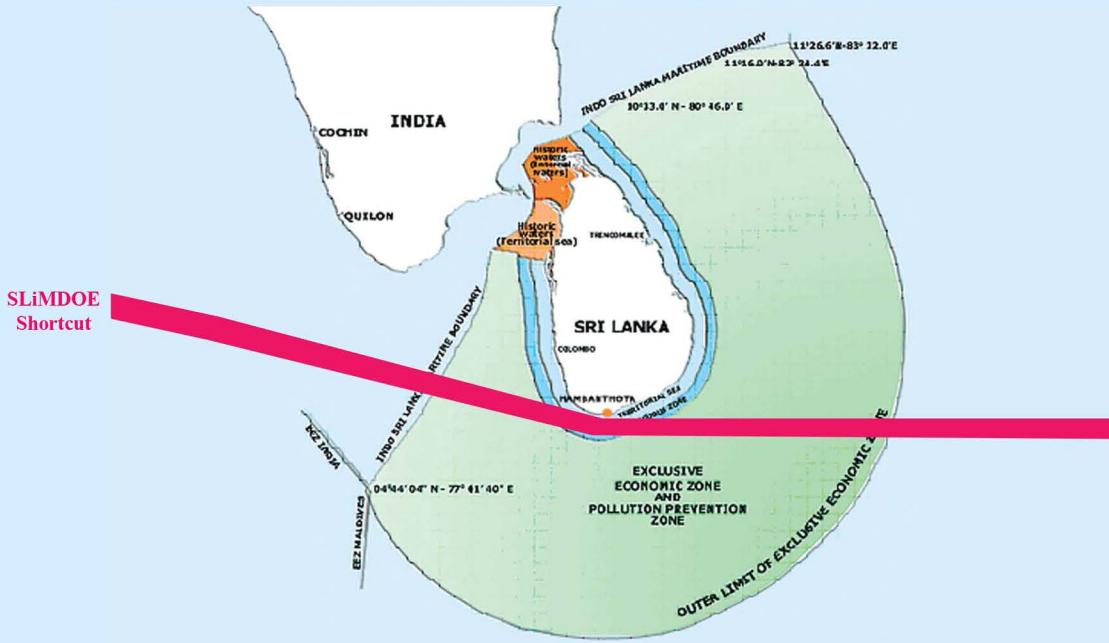


European Union's introduction of a supra-regional carbon tax on shipping, and its implication to the suffering citizens of Sri Lanka for emissions offloaded during the passage on SLiMDOE (Sri Lanka's Multi-billion Dollar Ocean-air Expressway).



Ranjith Wickramasinghe.
FCMA (UK), FCCA, ACC.Dir.SL, CGMA, and JP

The author is an Independent Financial advisor and Consultant. He was the Former Chairman - Sri Lanka Ports Authority & Ceylon Shipping Corporation, and has published several economic-turnaround plans for Sri Lanka.

Contactable via email:
ranjith_wickramasinghe@ymail.com

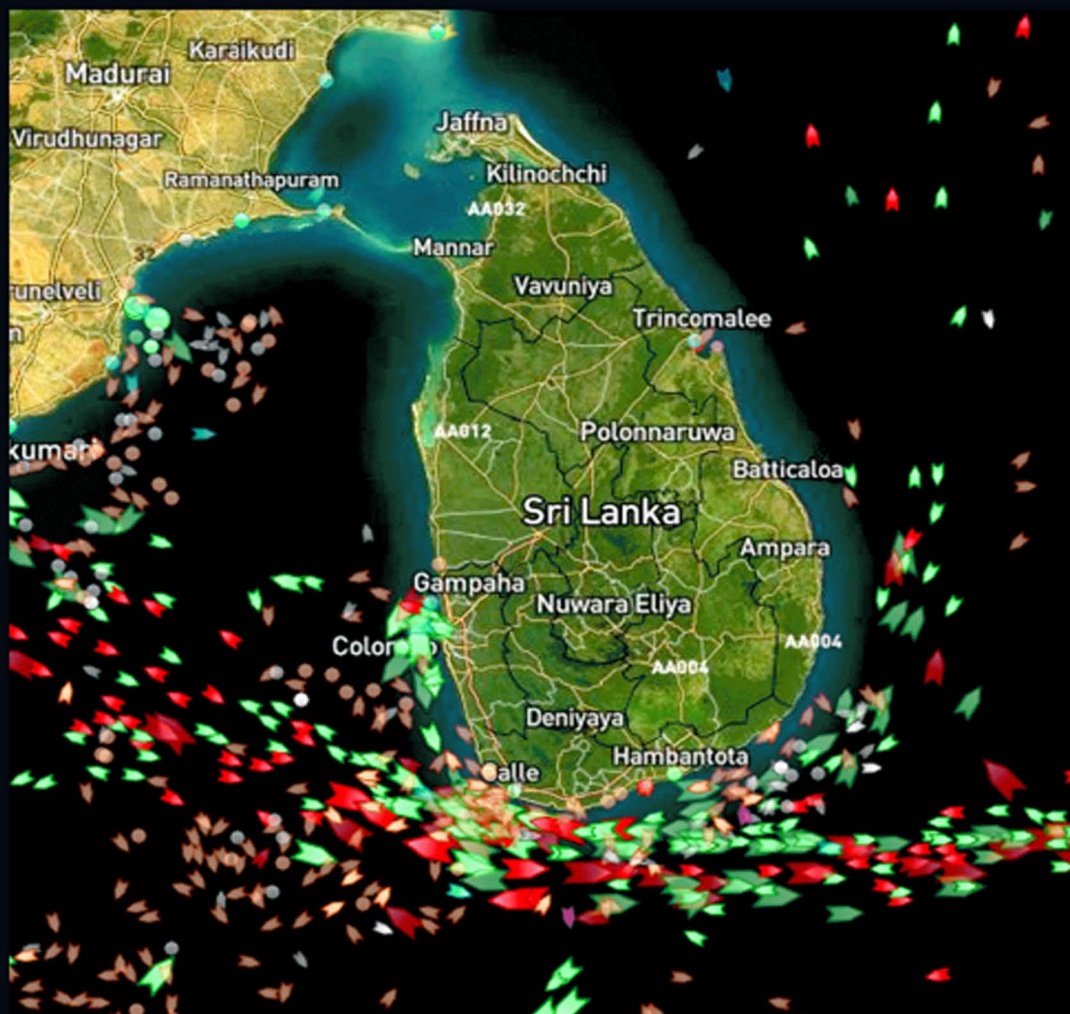
ISBN- 978-624-99952-3-9

Published By : R. J. Wickramasinghe on 07th September 2023
142/68 Jansenvilla, Anderson road, Nedimala, Dehiwala.



Sri Lanka's Multi-Billion Dollar Ocean-Air Expressway
SLiMDOE
Researched, formulated, invented, monetised and published by
Ranjith Wickramasinghe
former Chairman Sri Lanka Ports Authority and Ceylon Shipping Corporation;
FCMA (UK), FCCA, ACC.Dir.SL, CGMA, and JP - 2nd September 2021

Sri Lanka's Multi-Billion Dollar Ocean Expressway



SLiMDOE

A national resource that benefits
world trade 12 billion dollars per year,
but contributes nothing to Sri Lanka ...

7th September, 2023

Denis Chaibi
European Union Ambassador to Sri Lanka
European Union in Sri Lanka
389, Bauddhaloka Mawatha
Colombo.

SENT BY Registered Post

Your Excellency

European Union's introduction of a supra-regional carbon tax on shipping, and its implication to the suffering citizens of Sri Lanka for emissions offloaded during the passage on SLiMDOE (Sri Lanka's Multi-billion Dollar Ocean-air Expressway).

It has been reported that a supra-regional tax on shipping will be included in the European Union's emission trading system (ETS), and to put it more simply, "shipping will be subject to carbon tax in the European Union (EU)". **This is great news for the citizens of Sri Lanka.**

This carbon tax also encompasses emissions during the passage to a port located in the EU from a port located outside the EU, and also for passages from a port located outside the EU to a port in EU. This would mean that a voyage, for example – to or from Singapore to Rotterdam on which all the ocean vessels sail just a few miles away from Dondra Head in the southernmost tip of Sri Lanka, **taking a shortcut** are liable for the carbon tax effective 1st January 2024.

Excellency, **continuous loss and damage** is caused by the **pollution** to our blue ocean, blue sky, bio-diversity, world heritage sites, rain forests, mangroves, corals, beaches, mountains, rivers, our climate, our vegetation, fertility, the traditional irrigation methods, crops, flora, fauna, elephants, whales, turtles, dolphins, migratory birds, cultural and religious sites, economic resources, to our food security and water security by the annual 60,000 foreign ocean vessel crossings with in our 200 nautical mile Exclusive Economic Zone (EEZ), adjacent to Dondra Head light house in the southern tip of Sri Lanka, and the 45,000 aircraft crossings over Sri Lanka, carrying **40% of the world trade** via the "Sri Lanka's Multi-billion Dollar Ocean-air Expressway" (SLiMDOE shortcut).

SLiMDOE is a Resource, researched, formulated, invented, named, monetized, developed, and published **by me** in several ISBN publications, in open letters to the newspapers, magazines, and in TV interviews **detailed in my website.**

<https://www.ranjithwickramasinghe.com/>

SLiMDOE shortcut reduces the main east west shipping route distance by 400 miles, enabling rich countries to save US\$12 – 15 billion annually (US\$ 135 billion in the last decade) on reduced bunkers, transportation cost and quicker delivery, saving one day of sailing and one hour of flying per crossing, whilst the citizens of Sri Lanka take the hit on resultant CO₂, NO₂, SO₂, black carbon particles, etc. emitted at Ground Zero Intensity, and Sri Lankan citizens gets no revenue from these crossings. The savings accrued to the rich countries of during the last decade alone exceeded our foreign debt of US \$ 42 billion, repayments of which have been defaulted since March 2022.

These SLiMDOE crossings create a smoke screen in the ocean, and in the air, within our EEZ. At a given moment a chain of 110 moving vessels consisting of world's largest 350,000 MT tankers, 350,000 MT bulk carries and 24,000 TEU container ships (each of these vessels are over 400 meters long and could house ten soccer fields on-board), creates a smoke screen in the ocean stretching over 500 miles within our EEZ. Simultaneously a chain of 123 world's largest 500 seat aircraft too, create a smoke screen stretching over 500 miles at a given moment. Both acting in unison create a smoke corridor equivalent to the full length and breadth of our small coastal nation. **It is estimated that foreign carriers burn 8 to 10 billion tons of fossil fuel within our EEZ annually offloading Green House Gases (GHG) and damaging our economic resources.**

DAMAGE COST ESTIMATION

The current estimates of the social cost of carbon are **over US \$50 per ton**. While this is the most robust and credible figure available, it does not yet include all the widely recognized and accepted scientific and economic impacts of climate change. Based on this, the cost per ton of CO₂ is $(50 \times 3.66) = \text{US } \$ 183$. However, based on Landmark carbon capture project onboard a Stena Bulk tanker reported on March 22, 2023, this project aims to establish a pathway to reduce the cost of CO₂ capture to 150 Euro/tCO₂. Using the lower of them, we could **use \$ 150 per ton of CO₂ as the "economic cost"**.

Based on 8 million tons of marine bunker fuel being burnt per year in Sri Lankan waters by ships the CO₂ load could be estimated to be $(8 \times 3.2) = \text{25.6 million tons of CO}_2 \text{ emitted per year}$ (based on per kg of marine diesel, 3.2 kg of CO₂ will be emitted). **The estimated damage to the citizens of Sri Lanka therefore could be estimated at US \$ 3.84 billion per annum** $(25.6 \times 150 / 1000)$.

The above has happened for centuries and will go on for centuries. The loss and damage caused to our economic resources has and will certainly exceed **Trillions of Dollars**. It could be estimated that during the **last twenty years alone the damage was US \$ 75 billion**. This is an ongoing climate induced disaster, and the silent suffering of our Sri Lankan citizens needs to be remedied.

Our farmers, tea pluckers, coconut climbers, rubber tappers, cinnamon peelers, fisherman, and self-employed are down to **one meal a day** or none. Elephants are fighting humans for food, hospitals lack medicine, farmers lack fertilizer, schools lack paper/books, people are protesting the threefold increased taxes, high cost of living, sale of family silver, and the learned and Professionals are leaving the country.

ACTION NEEDED

Appreciate arrangements to reimburse the decarbonizing cost of the SLiMDOE emissions released by the vessels liable to pay the EU carbon tax. Such relief and grants are urgently needed to get Sri Lankan citizens out of the present predicament; save the children from malnutrition, elders and unemployed from starvation, provide medicine to the sick and students the education, and enable the able bodied persons to be gainfully employed to provide for their families.

I would appreciate an urgent meeting to discuss this matter with your Excellency, and in the meantime would appreciate forwarding a copy to the President of the European Union. I also kindly request the confirmation of receipt of this very important document.

Assuring your Excellency of my highest consideration.



Ranjith Wickramasinghe, FCMA, FCCA, ACC.Dir.SL, CGMA, and a Justice of Peace

Former Chairman Sri Lanka Ports Authority and Ceylon Shipping Corporation,
SLiMDOE Concept Author, Resource Developer, and Chairman
SLiMDOE (Pvt) Limited

European Union's introduction of a supra-regional carbon tax on shipping, and its implication to the suffering citizens of Sri Lanka for emissions offloaded during the passage on SLiMDOE (Sri Lanka's Multi-billion Dollar Ocean-air Expressway).

ISBN- 978-624-99952-3-9

Published By : R. J. Wickramasinghe on 7th September, 2023
142/68 Jansenvilla, Anderson road, Nedimala, Dehiwala.